

# TULSA PORTS

**BARGE · RAIL · INDUSTRIAL PARK**

CATOOSA · INOLA

## NADO

### NATIONAL REGIONAL

### TRANSPORTATION

### CONFERENCE

## Freight and Economic Development



**John L. McClellan**

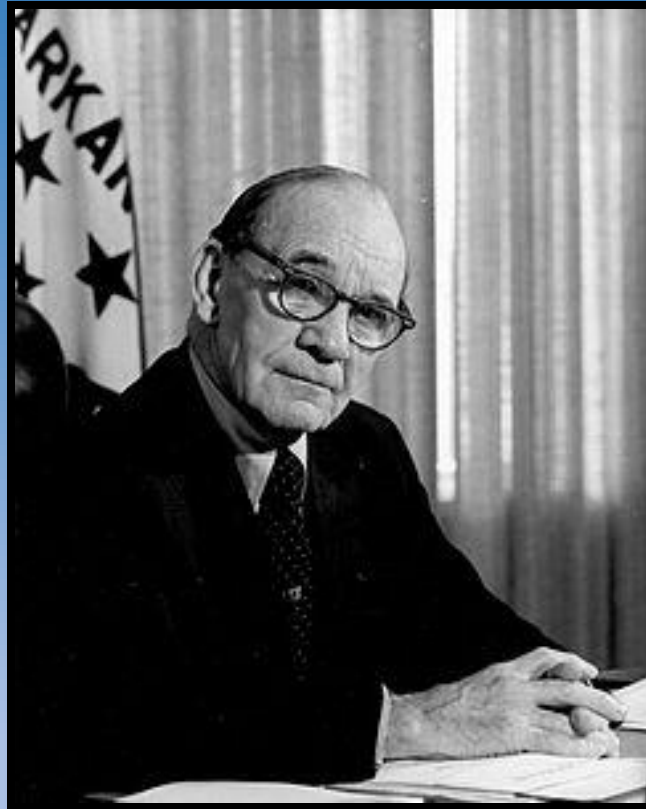


**Robert S. Kerr**

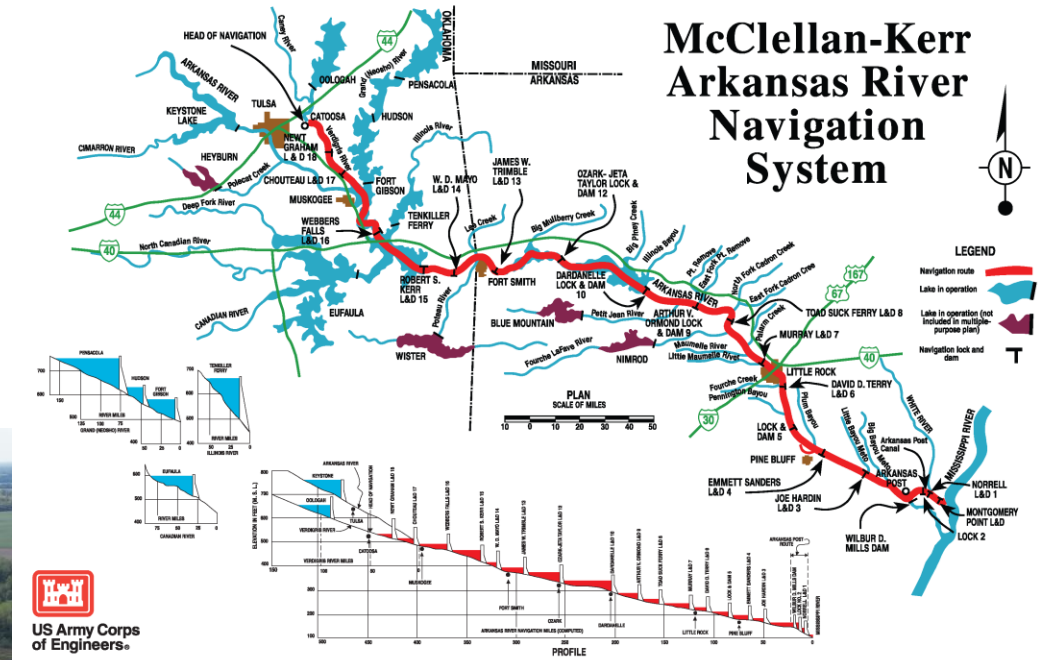
## **Arkansas River Flooding**

Congress passed the 1946 Rivers and Harbors act  
That act authorized the building of what would  
eventually become the

**McClellan-Kerr Arkansas River Navigation System**



# MCCLELLAN-KERR ARKANSAS RIVER NAVIGATION SYSTEM (MKARNS)



# Benefits of the MKARNS



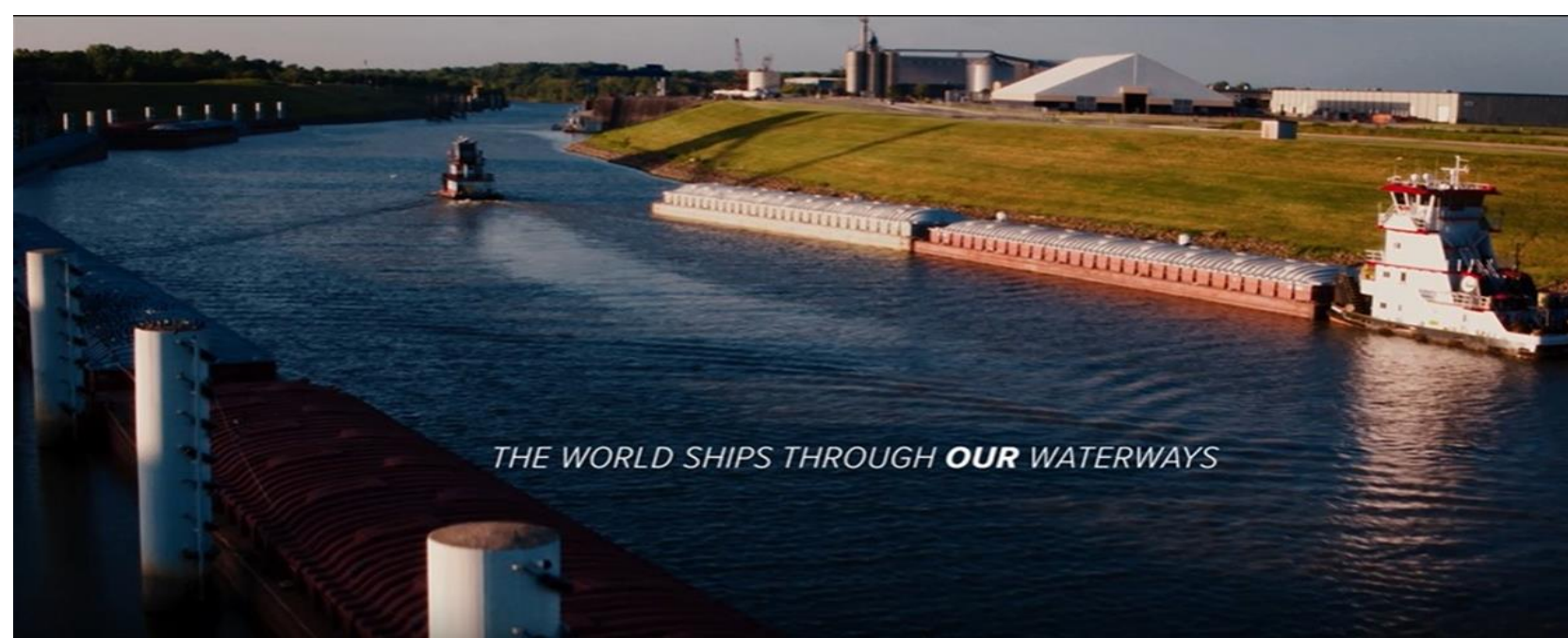
- Flood Control
- Hydro Power
- Recreation
- Navigation
- Water Supply



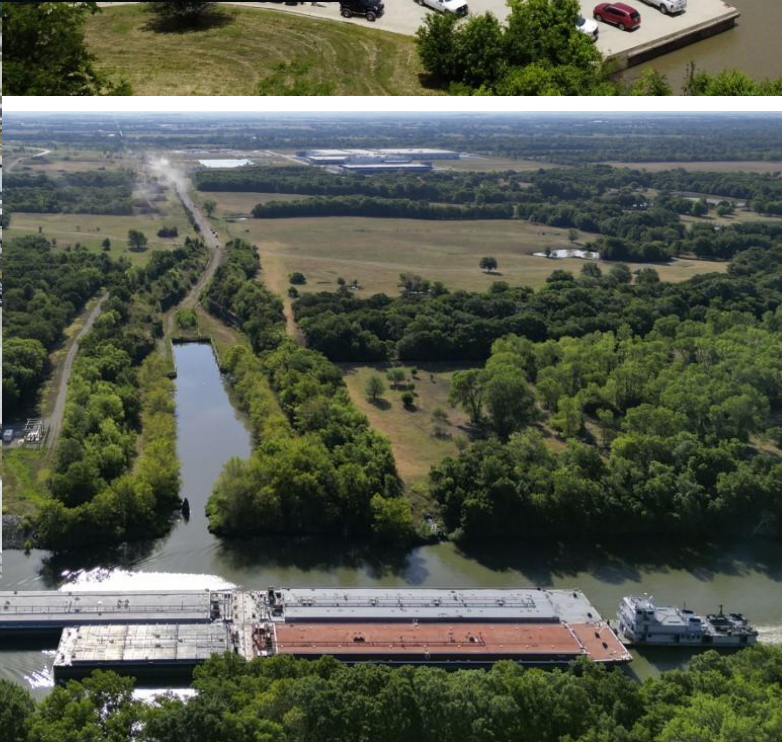
# City of Tulsa-Rogers County Port Authority

- Non-appropriated entity of the State of Oklahoma created by the Port Authority Act
- 9-Member Board of Directors (appointed)
- Wholly owned subsidiary – Facilities Authority
- Self-sustaining through land leases/sales and transportation services revenue





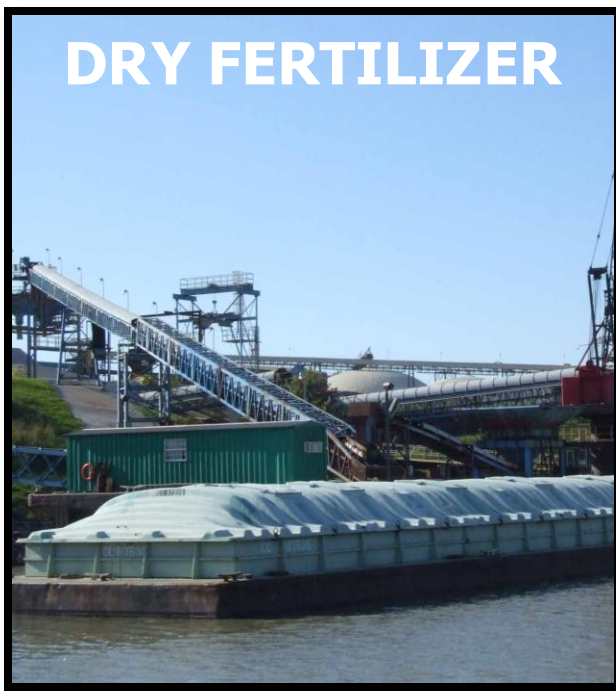
THE WORLD SHIPS THROUGH **OUR** WATERWAYS



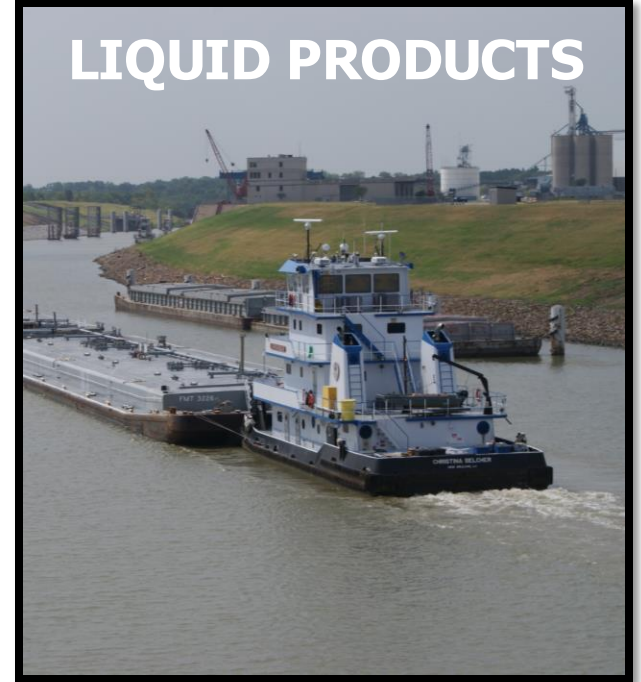
**STEEL**



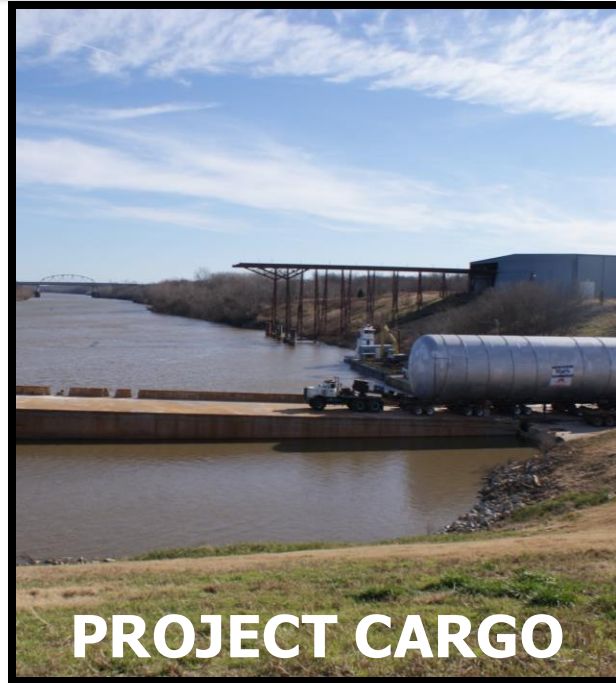
**DRY FERTILIZER**



**LIQUID PRODUCTS**

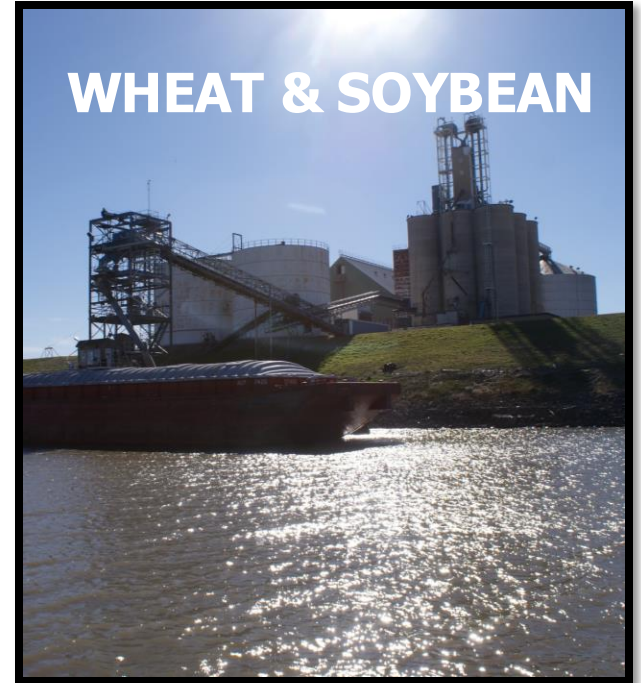


**PROJECT CARGO**



**PROJECT CARGO**

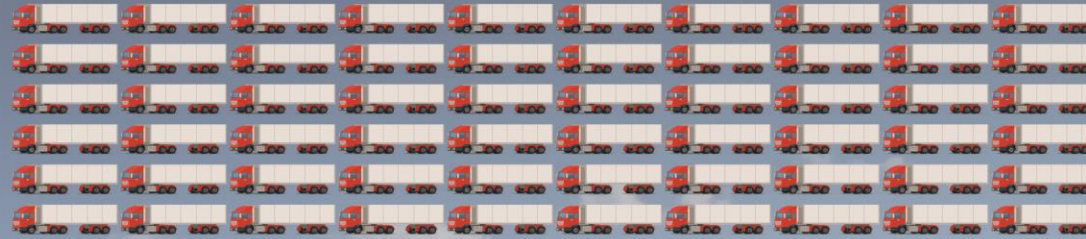
**WHEAT & SOYBEAN**



# MODES OF TRANSPORTATION CAPACITY COMPARISON



15 RAILCARS



60 TRUCKS



1 BARGE



**TULSA PORTS**  
BARGE · RAIL · INDUSTRIAL PARK  
CATOOSA · INOLA



The goal of the **Workforce & Education** program at Tulsa Ports is to support the companies located at the Tulsa Port of Catoosa & the Tulsa Port of Inola in their workforce efforts. Helping to attract the talent needed for today and plan for their workforce needs of the future.



The Rogers County Center of Excellence is a collaboration of several groups in Rogers County working together to make sure that the workforce needs in are met. These groups include local Economic Developers, Schools, State and local agencies and Manufacturing Company Leaders.



These are 40-hour entry level training through the local Career Technology Centers. This training program helps applicants be ready to be hired by companies located at the Tulsa Ports



Tulsa Ports website offers a Careers Page where applicants can connect with the Workforce Director and be directed to Port companies that are hiring based on their skills and interest - <https://tulsaports.com/careers-education/jobs/>

The Tulsa Ports Career Center is designed to help potential employees connect with companies at the Tulsa Ports





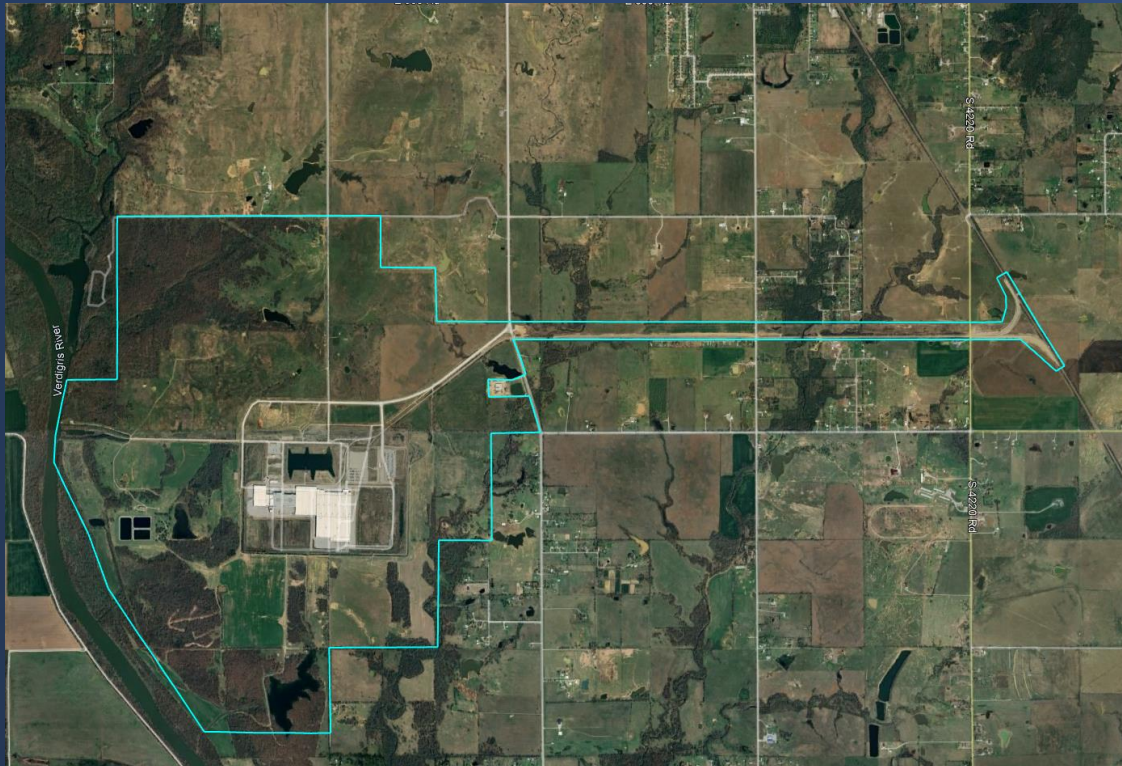
# TULSA PORTS

BARGE · RAIL · INDUSTRIAL PARK

---

CATOOSA · INOLA

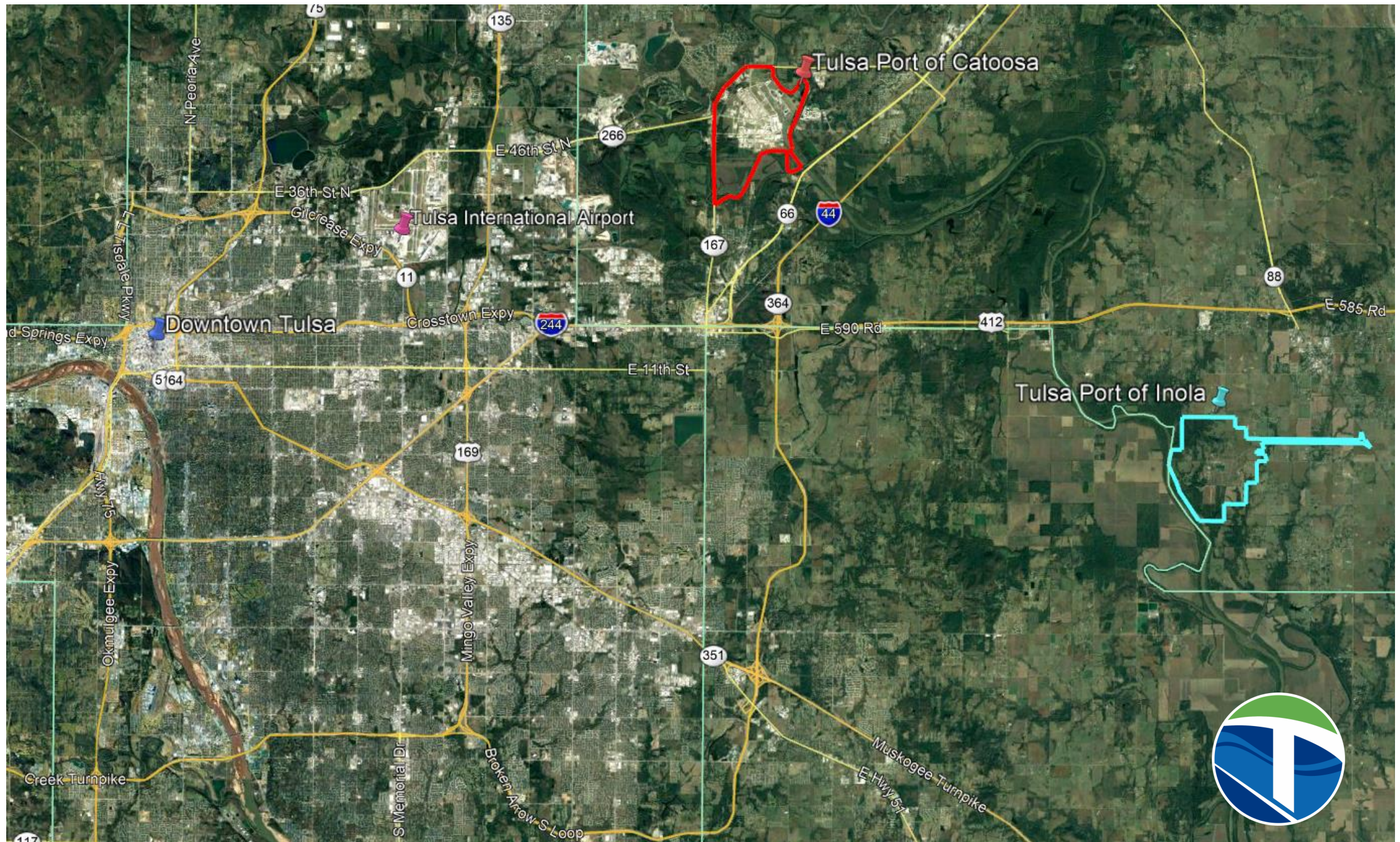
TULSA PORT OF INOLA



TULSA PORT OF CATOOSA



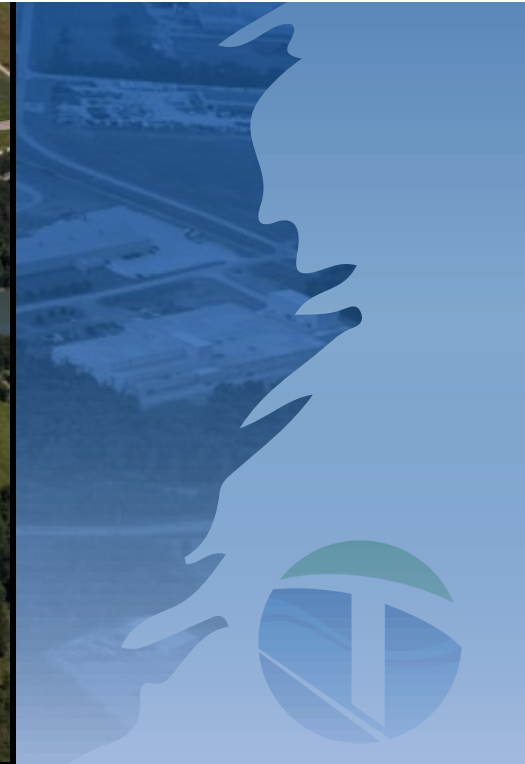
# Tulsa Ports Locations



- 2500 Acres
- 70 Companies
- Approx. 1000 trucks per day
- 2 million tons shipped per year by barge
- 90% of barge tonnage is agricultural products

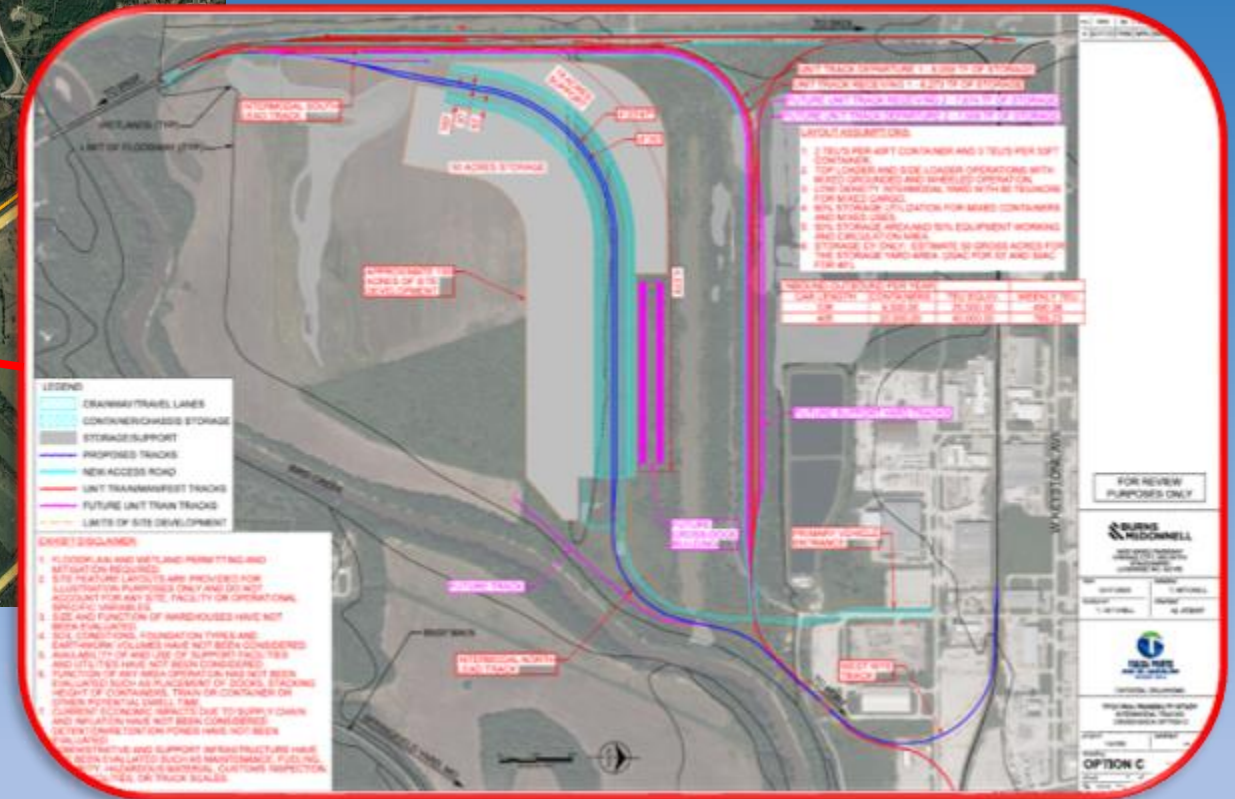
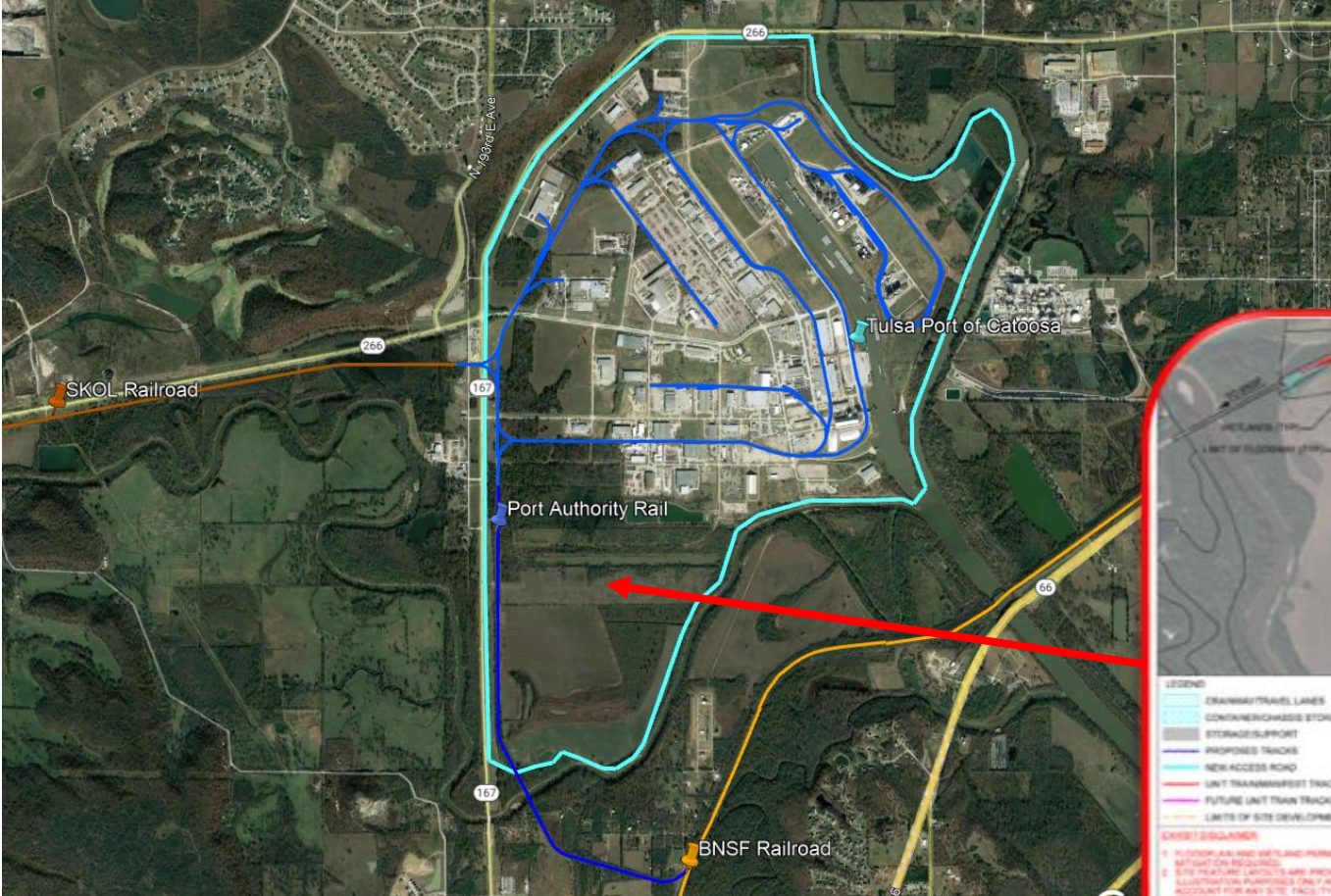


**TULSA PORT  
OF CATOOSA**





# Planned Rail Infrastructure





**TULSA PORT  
OF INOLA**

**In late 2019, Public  
Service Company of  
Oklahoma  
transferred 2,200  
acres of industrial  
land to the Port  
Authority**

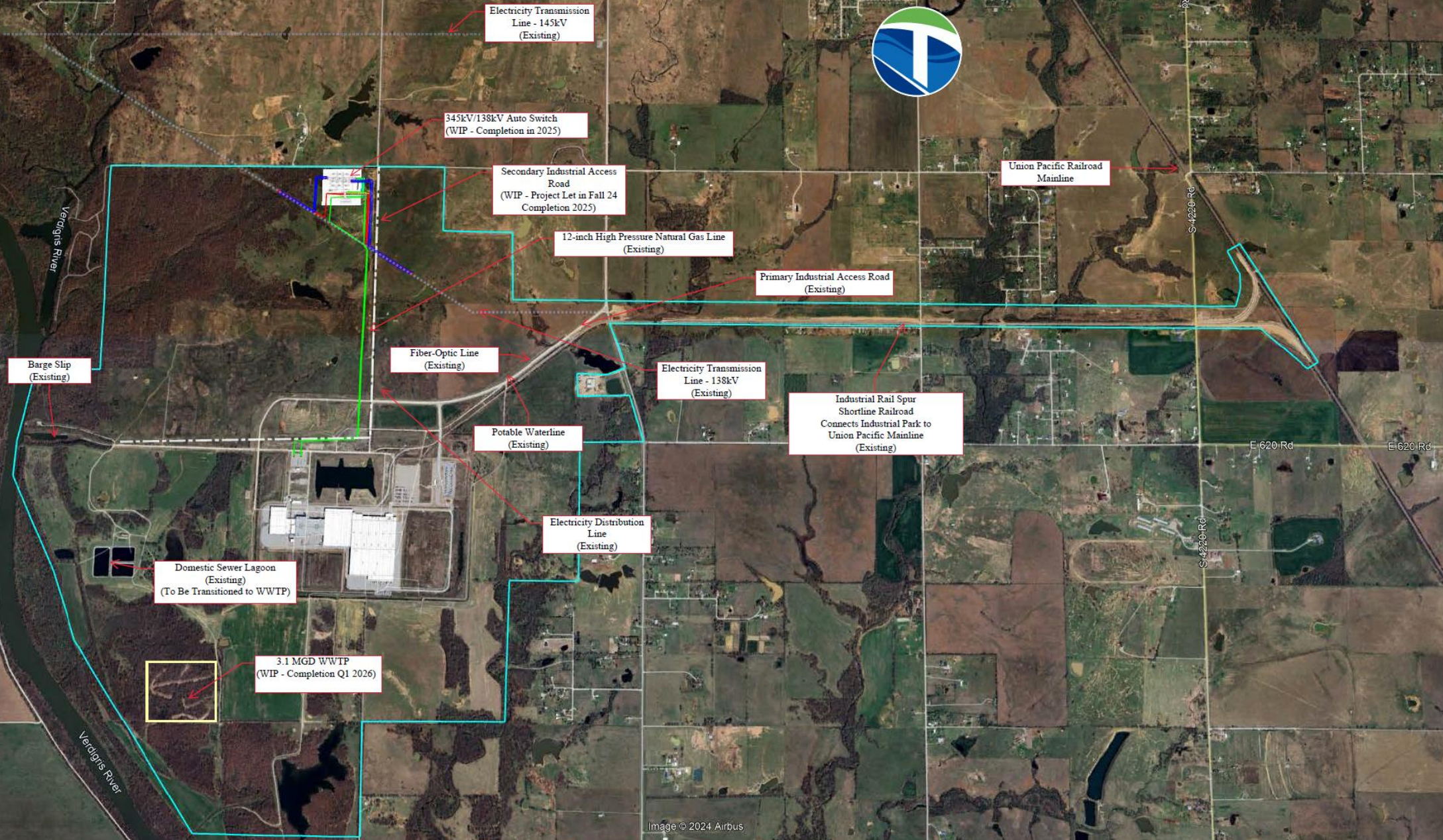


## TULSA PORT OF INOLA

2,500 acres - 1,108 Acres Certified for Industrial Development  
Master Planned by Burns & McDonnell



# TULSA PORT OF INOLA INFRASTRUCTURE ATTRIBUTES



Electricity Transmission Line - 145kV (Existing)

345kV/138kV Auto Switch (WIP - Completion in 2025)

Secondary Industrial Access Road (WIP - Project Let in Fall 24 Completion 2025)

12-inch High Pressure Natural Gas Line (Existing)

Primary Industrial Access Road (Existing)

Union Pacific Railroad Mainline

Barge Slip (Existing)

Fiber-Optic Line (Existing)

Electricity Transmission Line - 138kV (Existing)

Industrial Rail Spur Shortline Railroad Connects Industrial Park to Union Pacific Mainline (Existing)

Potable Waterline (Existing)

Electricity Distribution Line (Existing)

Domestic Sewer Lagoon (Existing) (To Be Transitioned to WWTP)

3.1 MGD WWTP (WIP - Completion Q1 2026)



# **U. S. FOREIGN TRADE ZONE NO. 53**

**Operating under the authority granted by the  
Foreign Trade Zones Board, U. S. Department of Commerce**



**Brian Bigbie**  
**Economic Development**  
**Tulsa Ports**

**O: 918.202.7707**

**C: 405.243.8370**

**E: [brian@tulsaports.com](mailto:brian@tulsaports.com)**

**[tulsaports.com/locate-here](https://tulsaports.com/locate-here)**



*SCAN ME*



*SCAN ME*



**TULSA PORTS**  
**BARGE · RAIL · INDUSTRIAL PARK**  
**CATOOSA · INOLA**

5350 Cimarron Road | Catoosa, OK 74015 | 918.266.2291 | [tulsaports.com](https://tulsaports.com)