



Safety Planning

PlanRVA & the Richmond Regional Transportation Safety Plan

Myles Busching, Director of Transportation

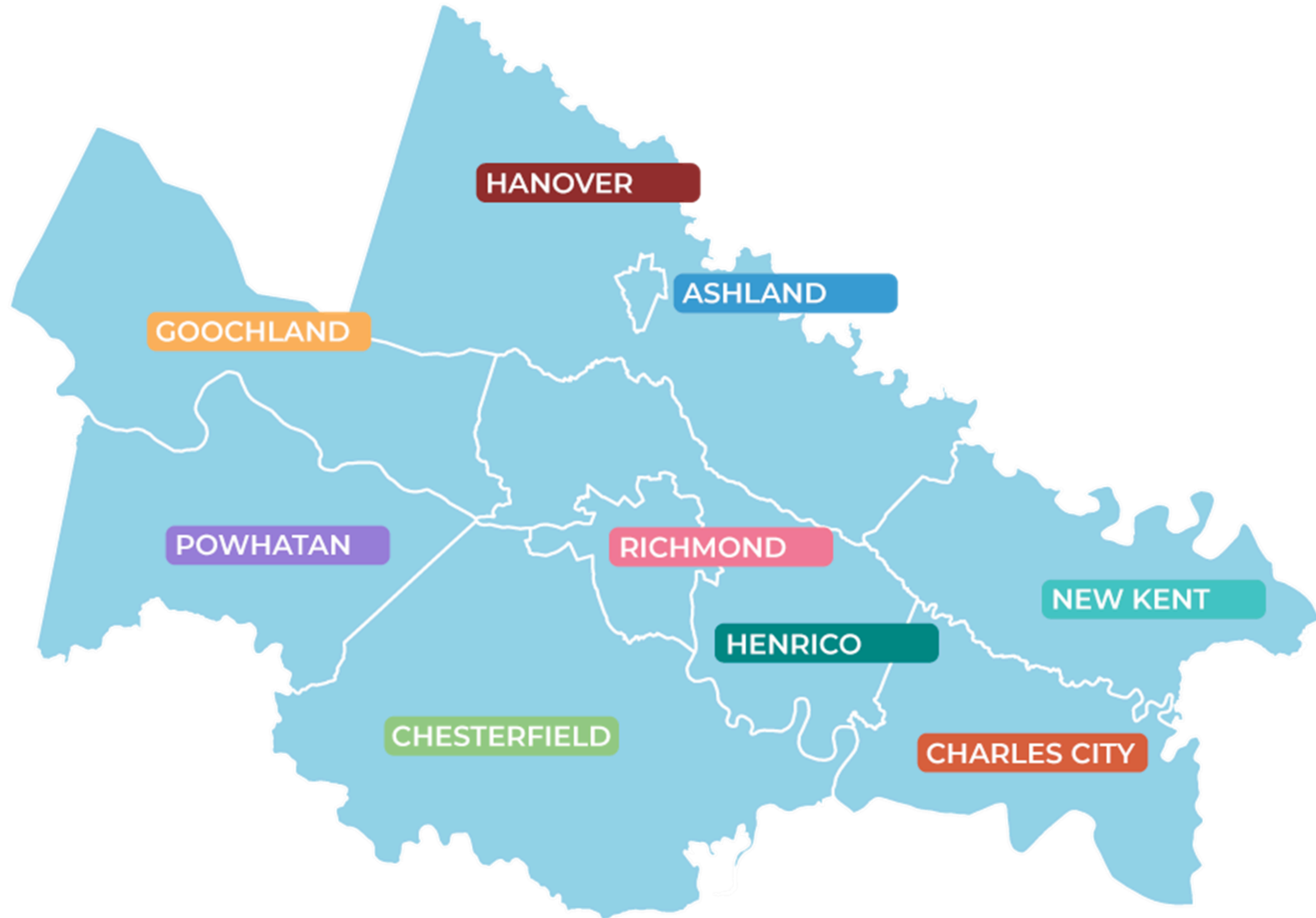
Agenda

Topics Covered

- 1 Richmond Region
- 2 Regional Safety Plan
- 3 Planning Impacts

Richmond Region

[Back to Agenda Page](#)



[Back to Agenda Page](#)



Transportation



Resiliency,
Emergency
Management, &
Environment



Community &
Economic
Development

[Back to Agenda Page](#)



Metropolitan Planning Organization,
develop long-range plan and
implements via TIP, federal funds



Regional authority, prioritizes and funds
regional projects from dedicated sales,
fuels tax revenues

Regional Safety Plan

[Back to Agenda Page](#)



Vision

The transportation system in the Richmond Region will reliably and safely connect people, prioritize more equitable opportunities for all to thrive and live healthy lives, promote a strong economy, and respect environmental stewardship.

107

People killed on our
roads each year

880

People seriously
injured on our roads
each year

110

People biking,
walking, or rolling
killed or seriously
injured each year

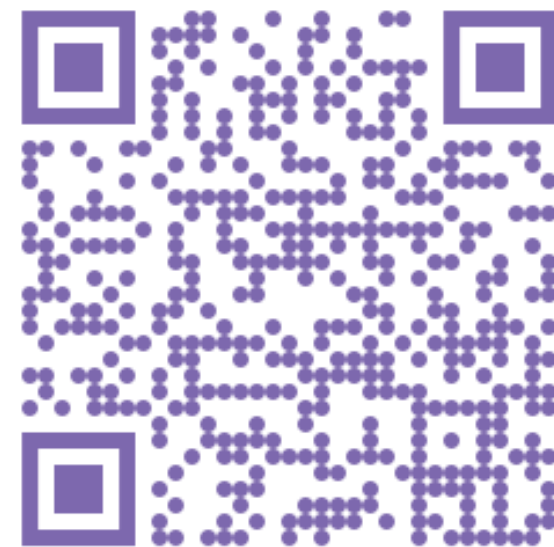


Richmond Regional Transportation Safety Plan

February 2022

Regional safety plan adopted
February 2022

City of Richmond's Vision Zero team
were major advocates and leaders
for this effort



Prepared for:



Prepared by:



[Back to Agenda Page](#)

Table 1: Cross-Tabulation of RRTPO KA injury crashes by emphasis areas.

	Impaired Driving	Speed	Occupant Protection	Roadway Departure	Intersections	Young Drivers	Bicycles	Pedestrians
Impaired Driving		27%	29%	28%	15%	13%	11%	32%
Speed	25%		29%	26%	17%	24%	9%	8%
Occupant Protection	32%	33%		33%	19%	23%	2%	5%
Roadway Departure	46%	45%	50%		4%	28%	7%	0%
Intersections	37%	43%	42%	5%		51%	60%	48%
Young Drivers	11%	22%	18%	14%	18%		20%	16%
Bicycles	2%	1%	0%	1%	3%	3%		0%
Pedestrians	20%	5%	3%	0%	12%	12%	1%	

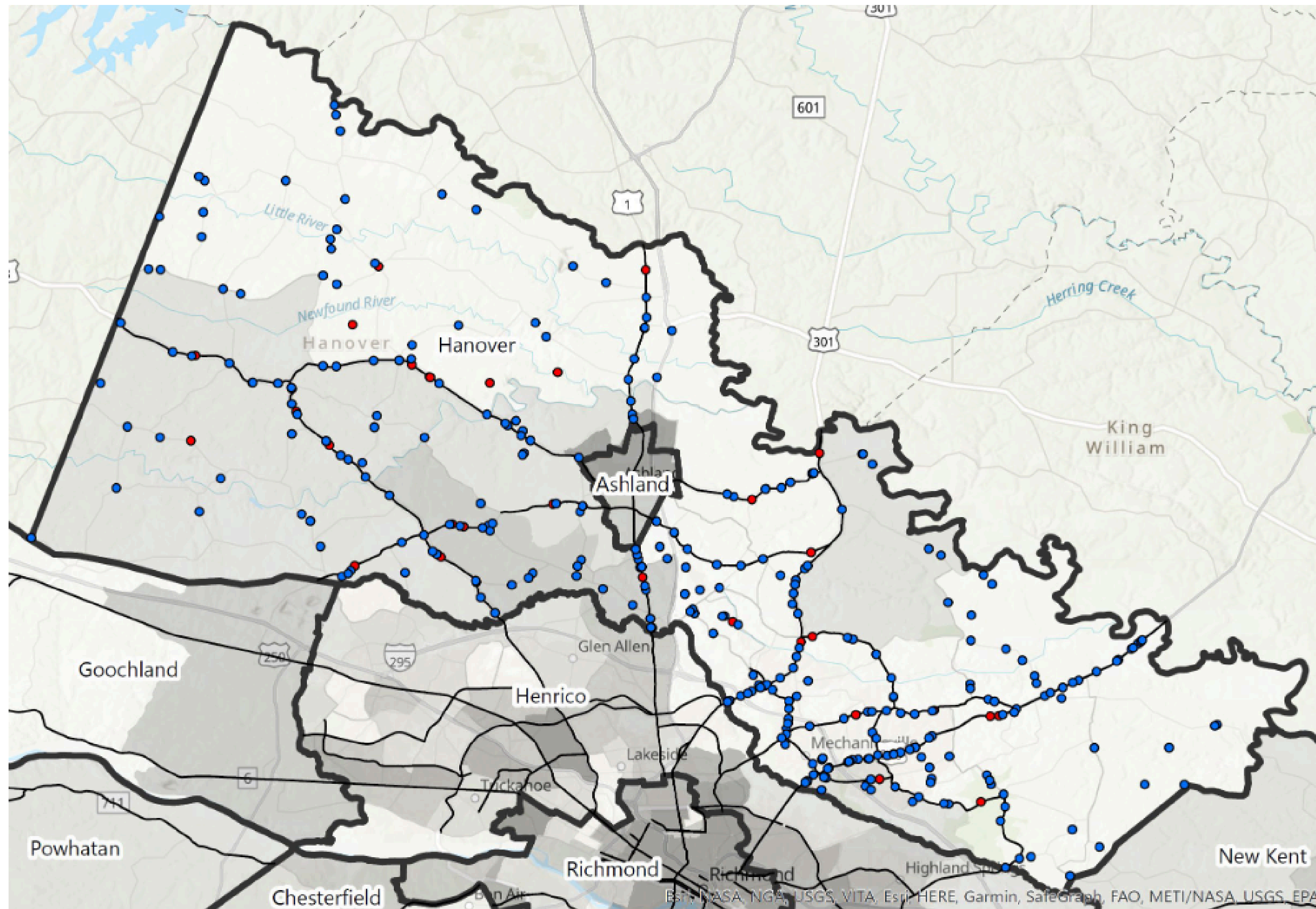




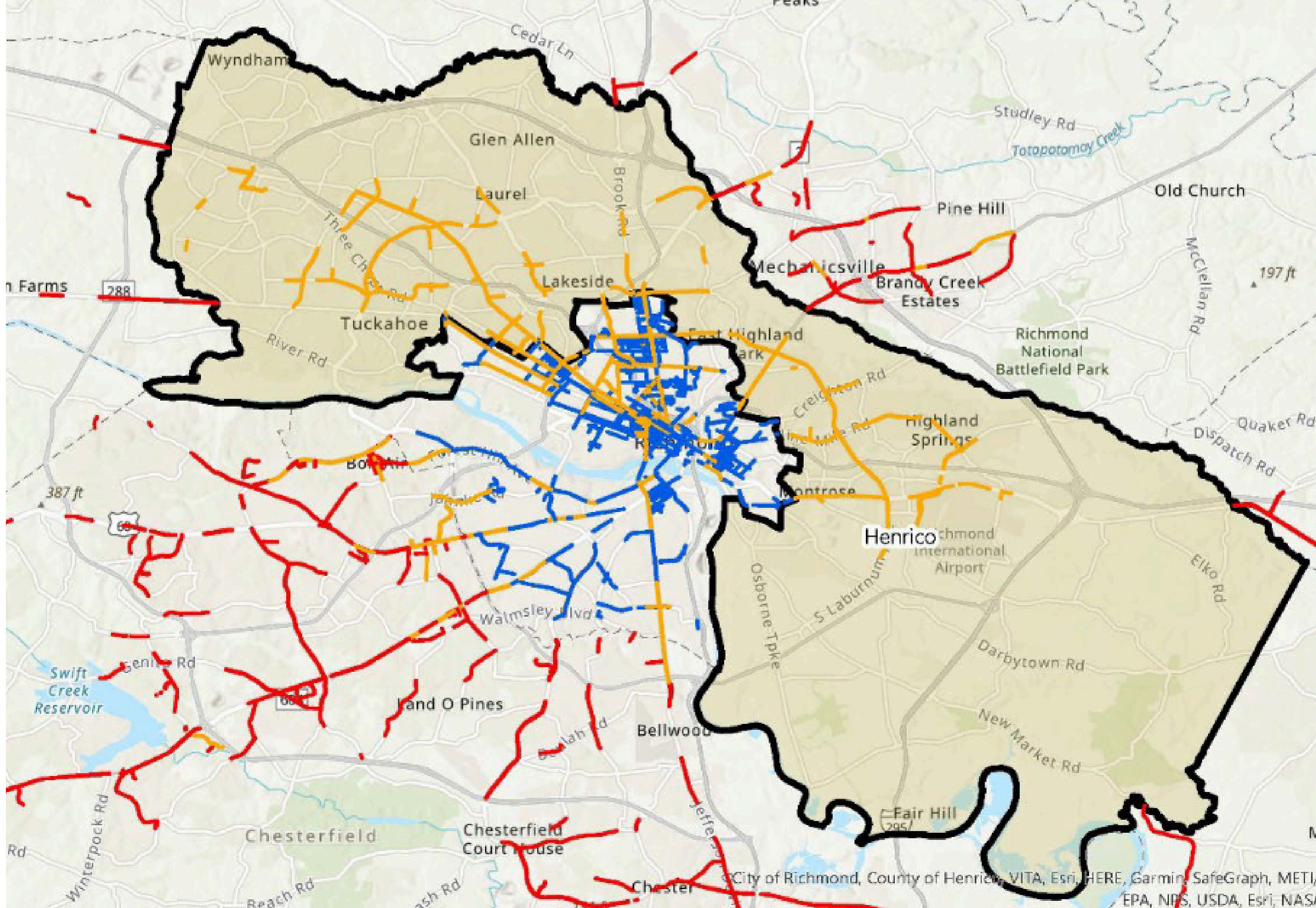
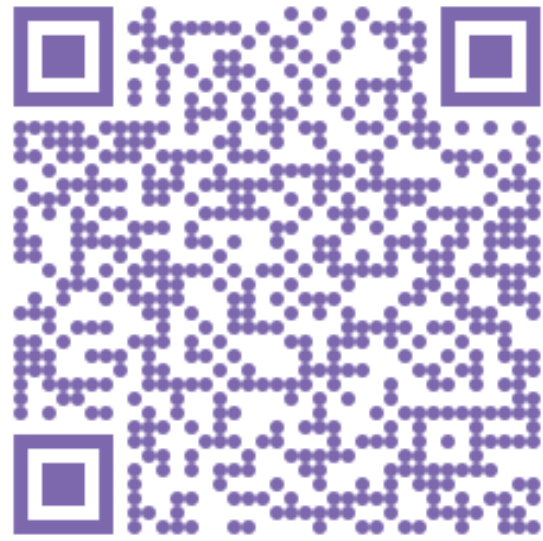
Table 12: High-Injury Network Corridors.

Locality KA Crashes	349
Locality KAB Crashes	1,620
Locality Roadway Miles	1,363.3

8.2% of Roads

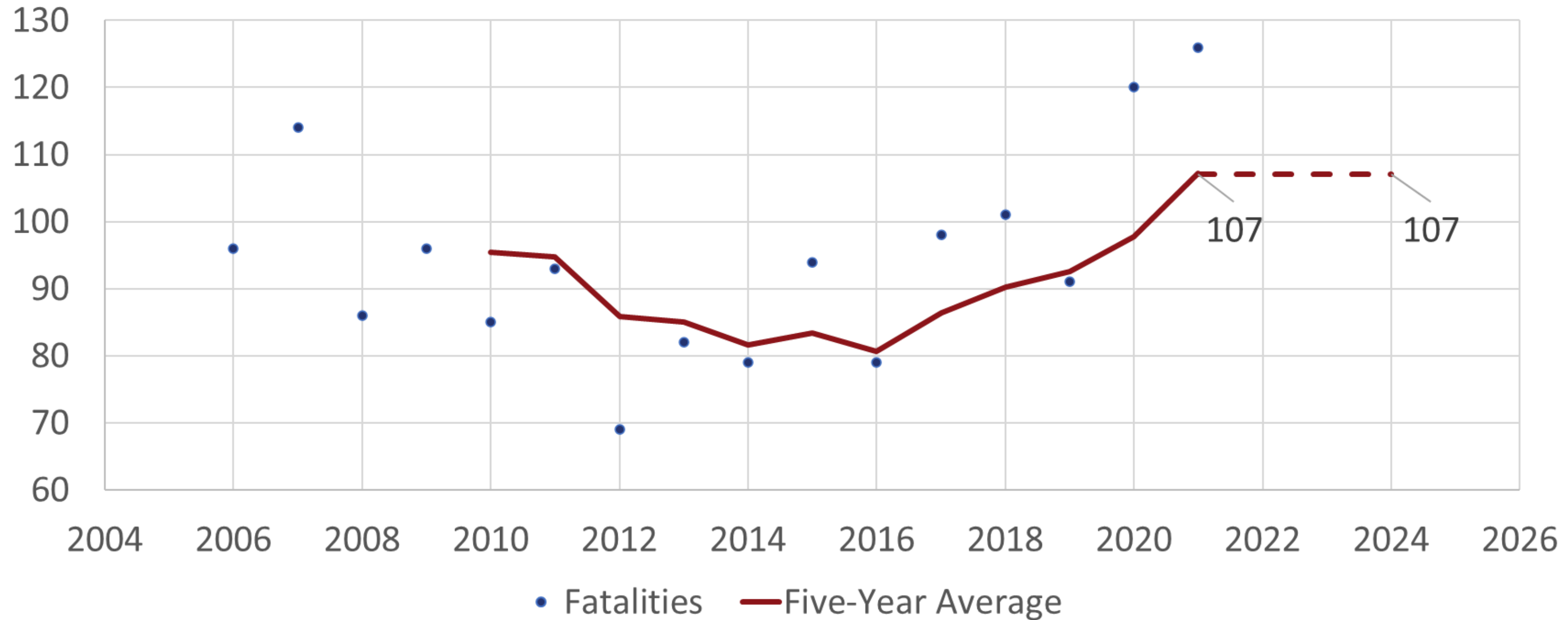
58.4% of Fatal and Serious Injury Crashes

Corridor	Length	K Crashes	A Crashes	% of Locality KA Crashes	% of Locality Miles
US-1 (full length)	10.23	4	17	6.0%	0.8%
VA-54 (full length)	15.14	5	20	7.2%	1.1%
US-33 (full length)	17.46	6	23	8.3%	1.3%
US-301 (full length)	11.93	2	18	5.7%	0.9%
VA-638 (full length)	4.74	0	7	2.0%	0.3%
US-360 (full length)	12.92	7	33	11.5%	0.9%
VA-627 (full length)	8.72	2	12	4.0%	0.6%
VA-657 (east of VA-666)	9.52	2	10	3.4%	0.7%
VA-623 (west of VA-666)	5.63	3	8	3.2%	0.4%
VA-643 (east of US-301)	7.46	1	12	3.7%	0.5%
VA-156 (full length)	9.82	2	10	3.4%	0.7%



Planning Impacts

[Back to Agenda Page](#)



[Back to Agenda Page](#)

Adopted more aggressive safety targets

FY25 UPWP Planning Efforts

- Rail grade crossing safety review
- Last mile access to transit with safety emphasis
- Prioritizing regional trails using safety, equity

Unified Planning Work Program

Fiscal Year 2025

July 1, 2024 - June 30, 2025



Establishing regional safety work group to

- Coordinate regional education and communications
- Share best practices
- Shape follow-up studies

February 2022



Prepared for:



Prepared by:





Thank you!

Crashes are preventable; no deaths or serious injuries are acceptable.

For more info, visit planrva.org