

Conversation
Café
Early Career
Engagement



Introductions



NAME



ORGANIZATION



POSITION

Icebreaker

If you were a breakfast food, what breakfast food would you be and why?



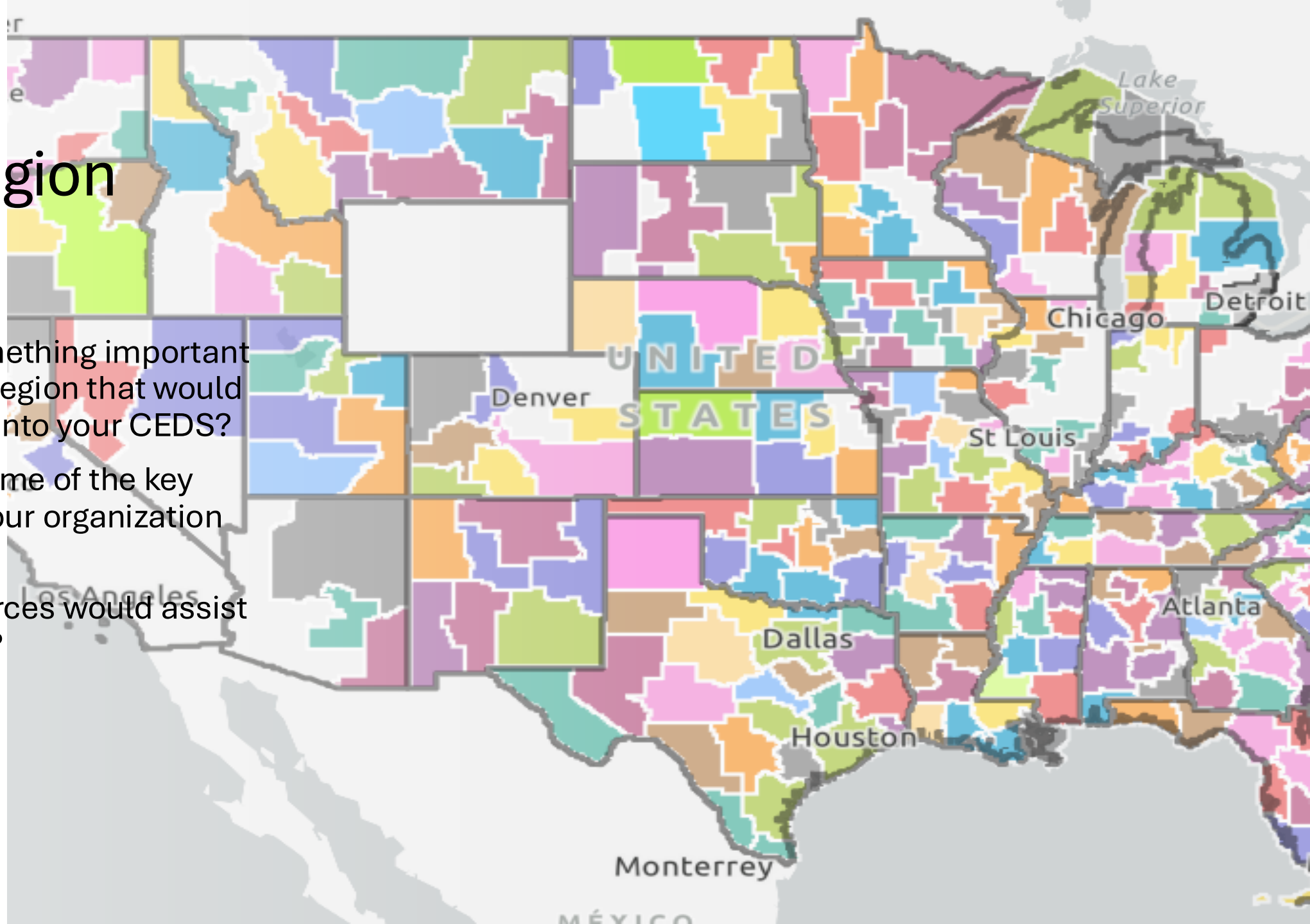
You

- What brought you to the economic development field?
- What are your goals?
- What are you taking away from the ATC this year?



Your Region

- What is something important about your region that would not make it into your CEDS?
- What are some of the key programs your organization runs?
- What resources would assist your region?





NADO

- What NADO resources have you found useful?
- What continued networking events would you be interested in?
- How can NADO make it easier for you to engage with us?



Thank you!